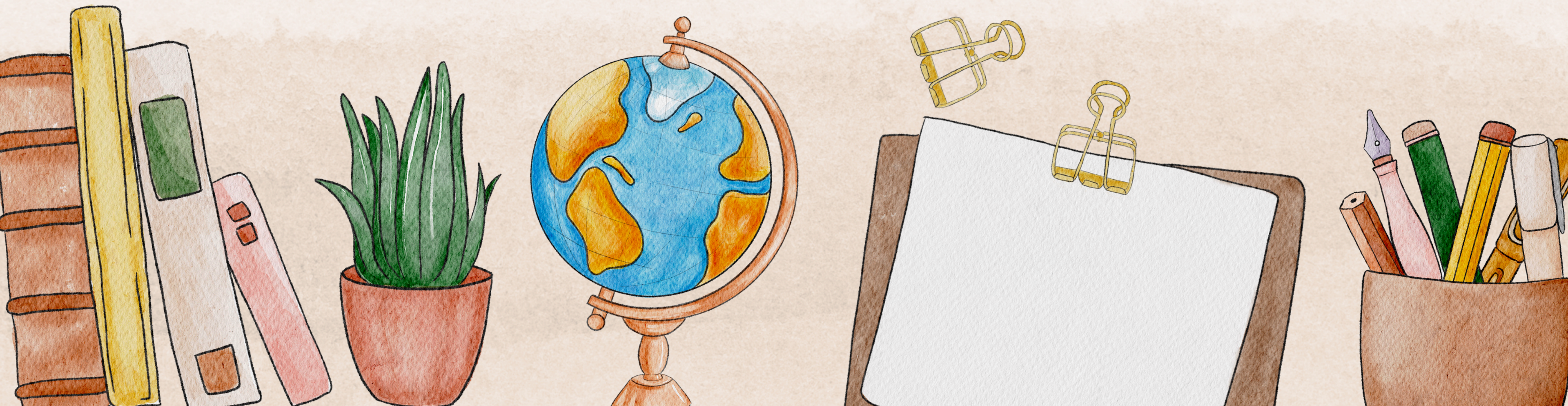
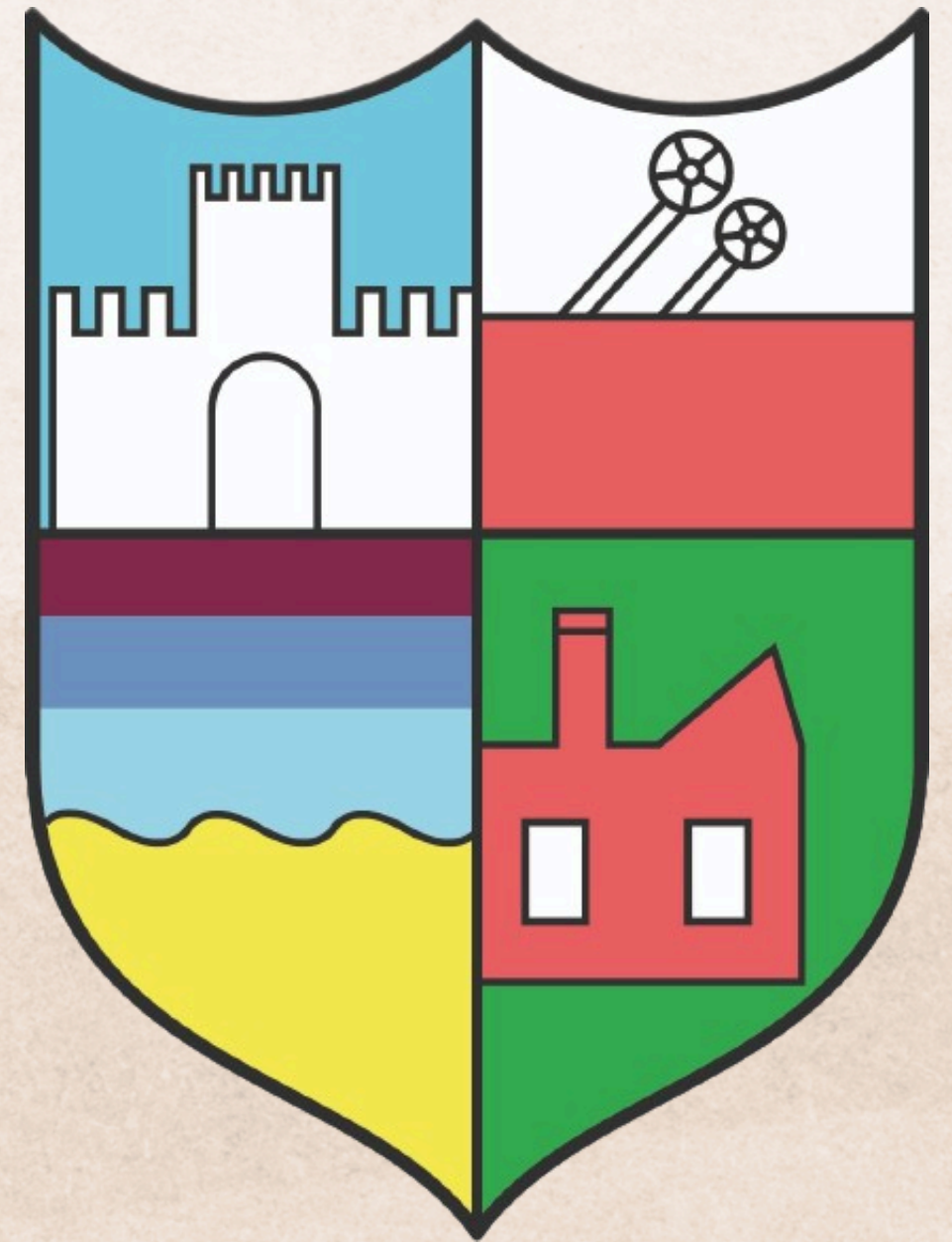


Year 6 *at Ellington Primary School*



Ellington Primary School

Parent / carer welcome
information booklet
2024-2025



Welcome to Year 6: a message from Mr Hodgson...

My name is Mr Hodgson. I have been the Headteacher at Ellington Primary since September 2021. All of the team and I will continue to do all we can to make sure Ellington gives your child the very best primary experience.

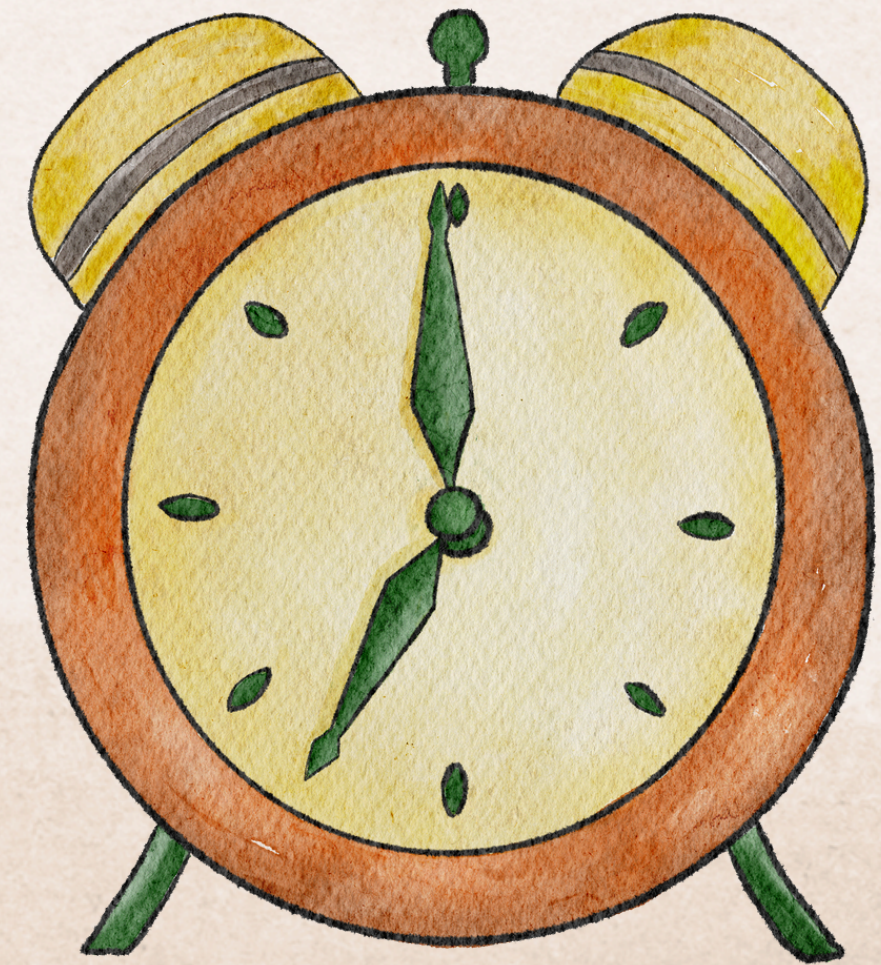


The School day and routines.

Our school day begins with registration at 8:45am with the doors opening at 8:40am.

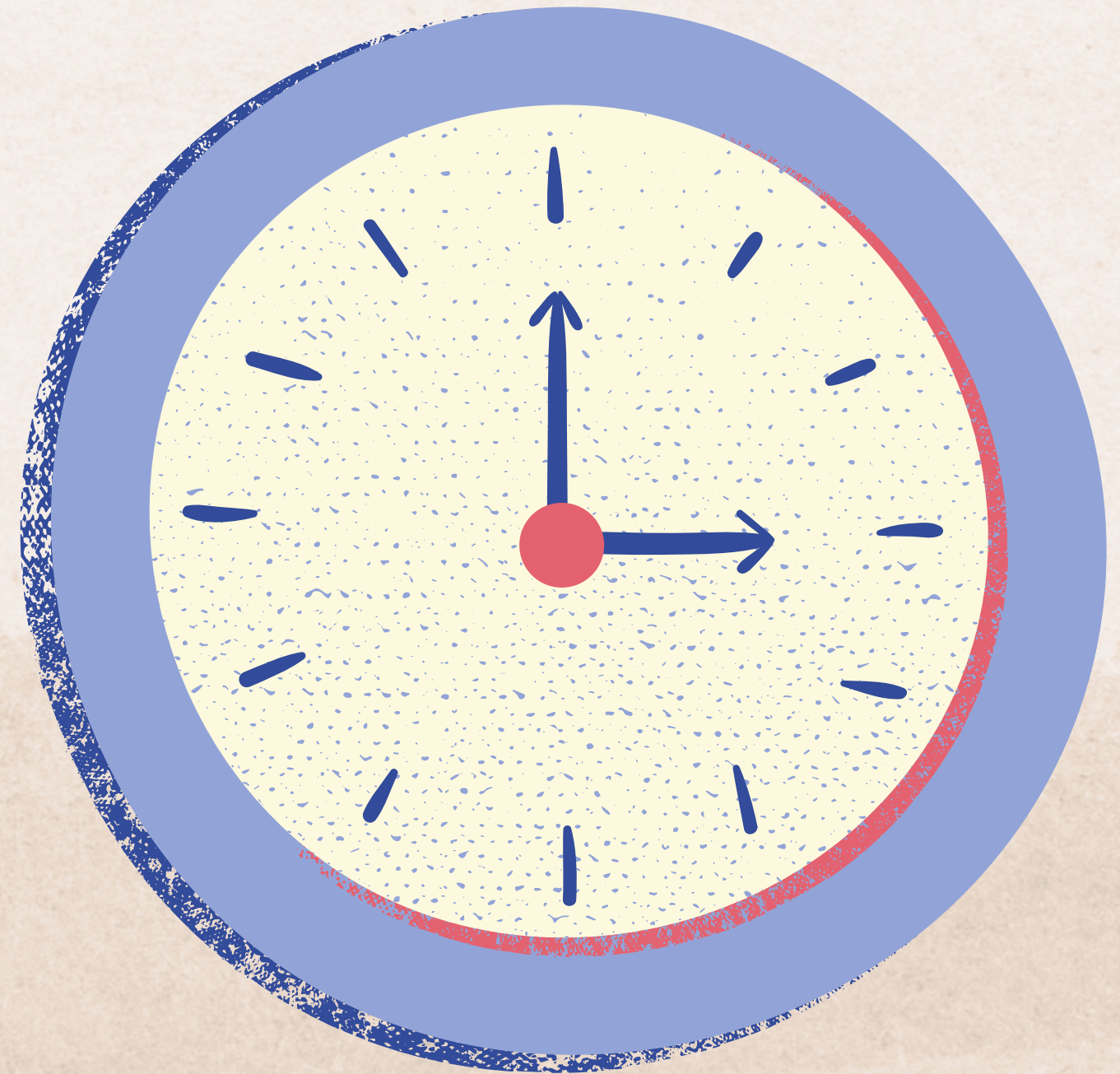
The school day ends at 3:15pm.

Our Nursery sessions run from 8:45am - 11:45am
(Morning session) and 12:15pm - 3:15pm
(Afternoon session) and 8:45am - 3:15pm for
full day sessions.



Attendance

In order for children to achieve their full potential, it is essential that they attend school regularly. The expectation is that children will attend for at least 96% of the time, taking into account illness. We work closely with our Education Welfare Officer and if a child's attendance becomes a concern we will inform parents/carers and meet with them to try and resolve the situation. However, if progress is not made, the Governors will be informed and the process may become official.



School Uniform

- Navy blue jumpers/cardigans
 - White polo-shirts/shirt.
- Black or charcoal skirt, shorts or trousers.
- Blue gingham summer dress.
 - Black school shoes



PE Kit

All classes will have two PE lessons per week from September as part of our active school approach. Your child's PE days will be on a **Thursday and Friday**. Children need to come to school wearing their PE kit so that they are ready for their lesson. This avoids wasting valuable time.

Children must wear:

- School PE Kit consisting of a white or navy t-shirt with embroidered badge and navy/black shorts
- Or
- Plain white or navy t-shirt and plain navy/black shorts.
 - Plain navy jogging bottoms.
 - School PE hoody, 1/4 zip or plain navy hoody.
- Children can wear any comfortable trainers on their PE day.

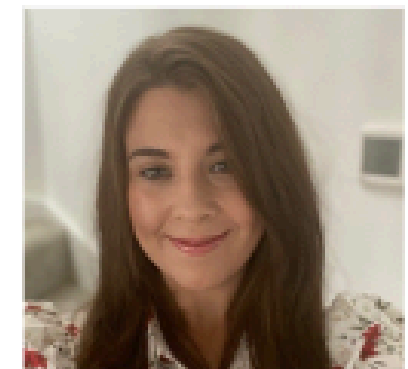
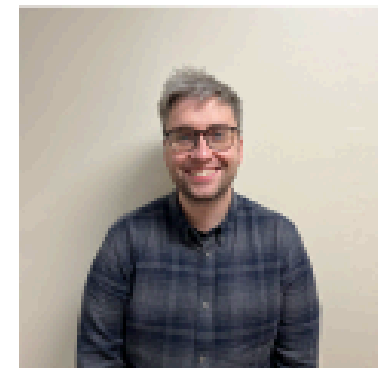
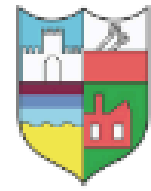


Meet the Teachers

These are the teachers at
Ellington Primary School.



Teaching Staff

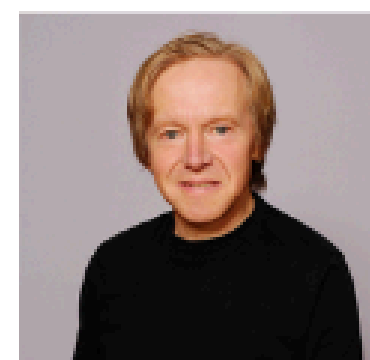
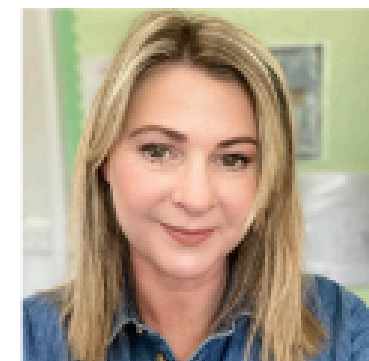


Meet the Support Staff

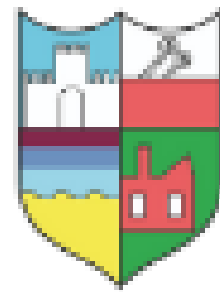
These are the support staff at
Ellington Primary School.



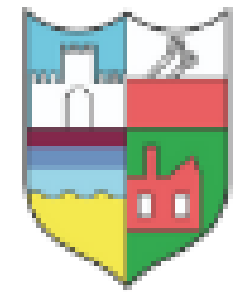
Support Staff



Other Staff



Other Staff



Welcome to Year 6

In this booklet, you will be introduced to teaching staff in Year 6 and important information for:

- Getting ready for Year 6
 - Class Routines
 - The school curriculum
 - How to support your child at home
- Please also take a look at our website where you will find lots of useful information about Ellington Primary School!



Meet the Year 6 Staff



I am Mrs Sanders, your Year 6 teacher. This is my third year teaching at Ellington but I have been teaching for a lot longer in Blyth and Essex. I'm also our school English Leader and one of the Assistant Headteachers.



I'm Mr Everett. I'm new! I'm your HLTA this year and can't wait to get started at Ellington. I look forward to getting started, smashing SATs scores and most importantly having fun.

Curriculum Enrichment



Curriculum Enrichment Map



Year 6

AUTUMN

SPRING

SUMMER

Visits/Visitors



Cragside

Visitor - Green Energy

Residential - City Experience



Environmental Focus

Renewable Energy

Light Pollution

Local Wildlife

Diversity

Black History



LBGTQ+

Local Heroes

Safeguarding

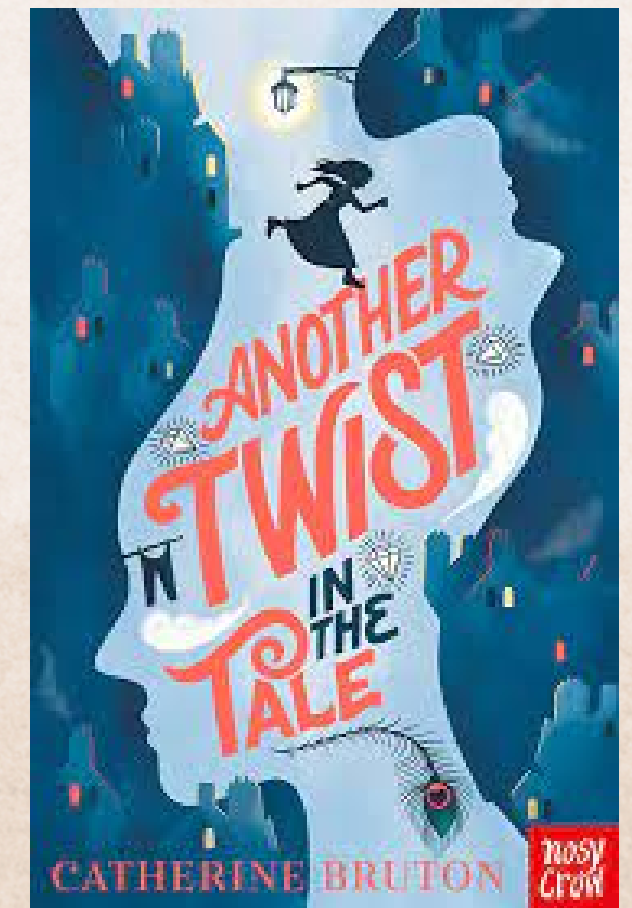
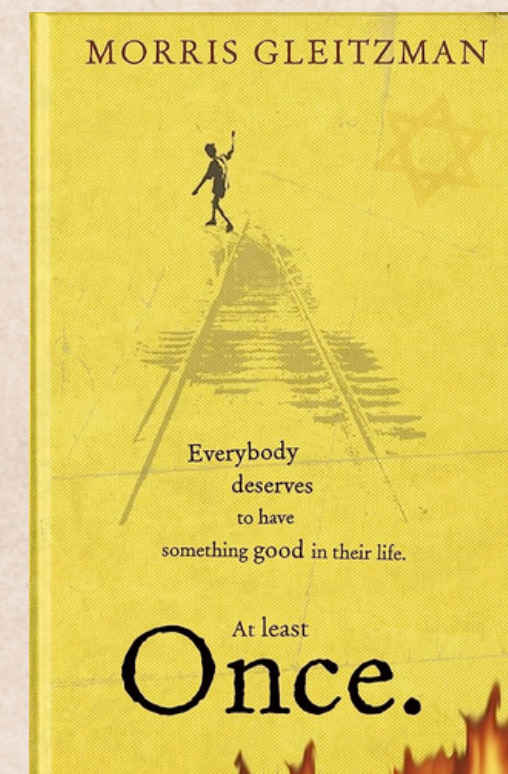
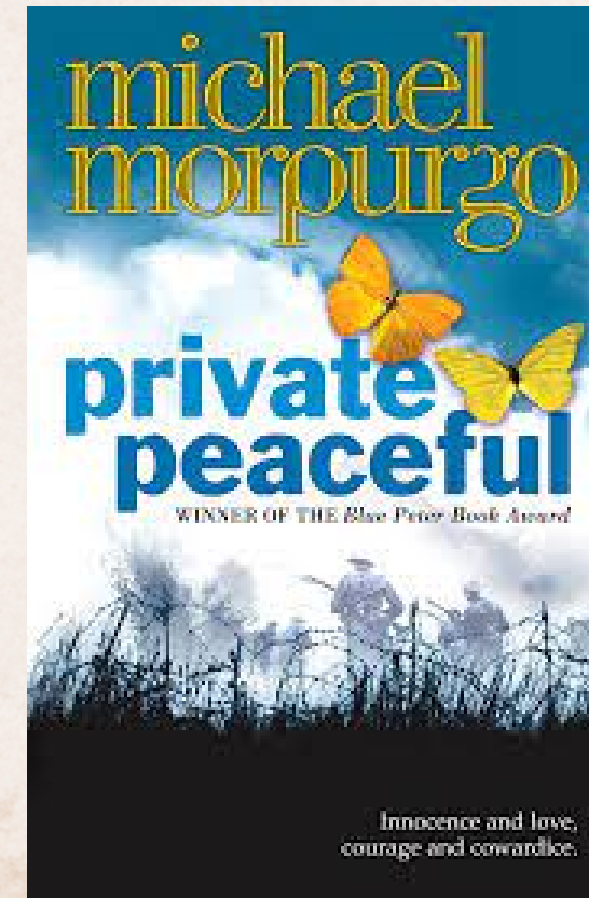
Bikeability

Mental Health

Transition to Secondary School

Reading in Year 6

Throughout the year, please ensure that your child is reading regularly either independently or with yourself. They could be reading articles, novels or anything else that interests them to encourage reading for pleasure. This is the most important skill that they can practice to ensure success in their future education. To the side, you will see some of the texts we will cover this year.



Maths in Year 6

In Year 6, we will be drawing together everything the children have learned throughout their time in primary school. We will explore fractions, decimals and percentages; algebra; ratio and proportion; the formal methods for the four operations; and place value of decimals and numbers up to 1 million.

Fractions	Decimals	Percentages
$\frac{1}{2}$	0.5	50%
$\frac{1}{3}$	$0.\dot{3}$	$33.\dot{3}\%$
$\frac{2}{3}$	$0.\dot{6}$	$66.\dot{6}\%$
$\frac{1}{4}$	0.25	25%
$\frac{3}{4}$	0.75	75%
$\frac{1}{5}$	0.2	20%
$\frac{1}{10}$	0.1	10%
$\frac{1}{20}$	0.05	5%
$\frac{1}{100}$	0.01	1%

Getting Ready for Year 6

What can you do to get ready for Year 6?

Practise becoming more independent.

Learn your times tables and related division facts.

Read regularly and discuss the language choices of authors.

Develop well-being strategies to help with self-regulation.

Practise organisation skills by doing jobs around the house.

Start to work on life skills to begin preparing for secondary school.

Discuss online safety.

Revise previously learnt facts from Key Stage 2.





Contact Me



You can find me outside Year 6 every morning before school and at home time. You can also contact me via Class Dojo for anything informal (Please note Dojo will only be accessed by staff between 8am and 5pm Monday to Friday). Additionally, if you would like to contact the school office to discuss any questions you may have, you can do so by contacting....



01670 860769



admin@ellington.northumberland.sch.uk